

MIT Open Access Articles

Z-Selective Olefin Metathesis Processes Catalyzed by a Molybdenum Hexaisopropylterphenoxide Monopyrrolide Complex

The MIT Faculty has made this article openly available. **Please share** how this access benefits you. Your story matters.

Citation: Flook, Margaret M., Annie J. Jiang, Richard R. Schrock, Peter Muller, and Amir H. Hoveyda. "Z-Selective Olefin Metathesis Processes Catalyzed by a Molybdenum Hexaisopropylterphenoxide Monopyrrolide Complex." *Journal of the American Chemical Society* 131, no. 23 (June 17, 2009): 7962-7963.

As Published: <http://dx.doi.org/10.1021/ja902738u>

Publisher: American Chemical Society (ACS)

Persistent URL: <http://hdl.handle.net/1721.1/82549>

Version: Author's final manuscript: final author's manuscript post peer review, without publisher's formatting or copy editing

Terms of Use: Article is made available in accordance with the publisher's policy and may be subject to US copyright law. Please refer to the publisher's site for terms of use.





Published in final edited form as:

J Am Chem Soc. 2009 June 17; 131(23): 7962–7963. doi:10.1021/ja902738u.

Z-Selective Olefin Metathesis Processes Catalyzed by a Molybdenum Hexaisopropylterphenoxide Monopyrrolide Complex

Margaret M. Flook[‡], Annie J. Jiang[‡], Richard R. Schrock^{‡,*}, Peter Müller[‡], and Amir H. Hoveyda[†]

[‡]Department of Chemistry 6-331, Massachusetts Institute of Technology, Cambridge, Massachusetts 02139

[†]Department of Chemistry, Merkert Chemistry Center, Boston College, Chestnut Hill, Massachusetts 02467

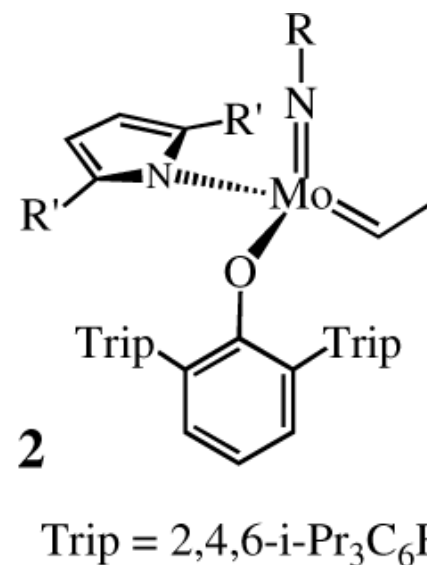
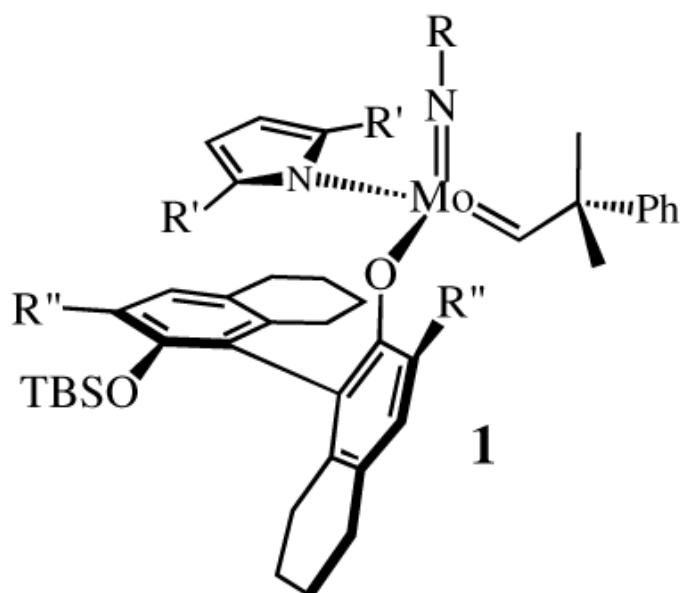
Abstract

The molybdenum-based monoaryloxy monopyrrolide (MAP) species, Mo(NAd)(CHCMe₂Ph)(C₄H₄N)(HIPTO) (**2a**), which contains “small” imido (Ad = 1-adamantyl) and “large” aryloxy (HIPTO = O-2,6(2,4,6-i-Pr₃C₆H₂)C₆H₃) ligands, catalyzes Z-selective metathesis reactions as a consequence of intermediate metallacyclobutane species not being able to have a (*anti*) substituent pointing toward the HIPTO group. ROMP of dicarbomethoxynorbornadiene (DCMNBD) with 2% **2a** in toluene leads to >99% *cis* and >99% *syndiotactic* poly(DCMNBD), while ROMP of cyclooctene and 1,5-cyclooctadiene (300 equiv) with initiator **2a** leads to poly(cyclooctene) and poly(cyclooctadiene) that have *cis* contents of >99%; all are previously unknown microstructures. Z-selectivity is also observed in the metathesis of *cis*-4-octene and *cis*-3-hexene by initiator **2a** to give *cis*-3-heptene.

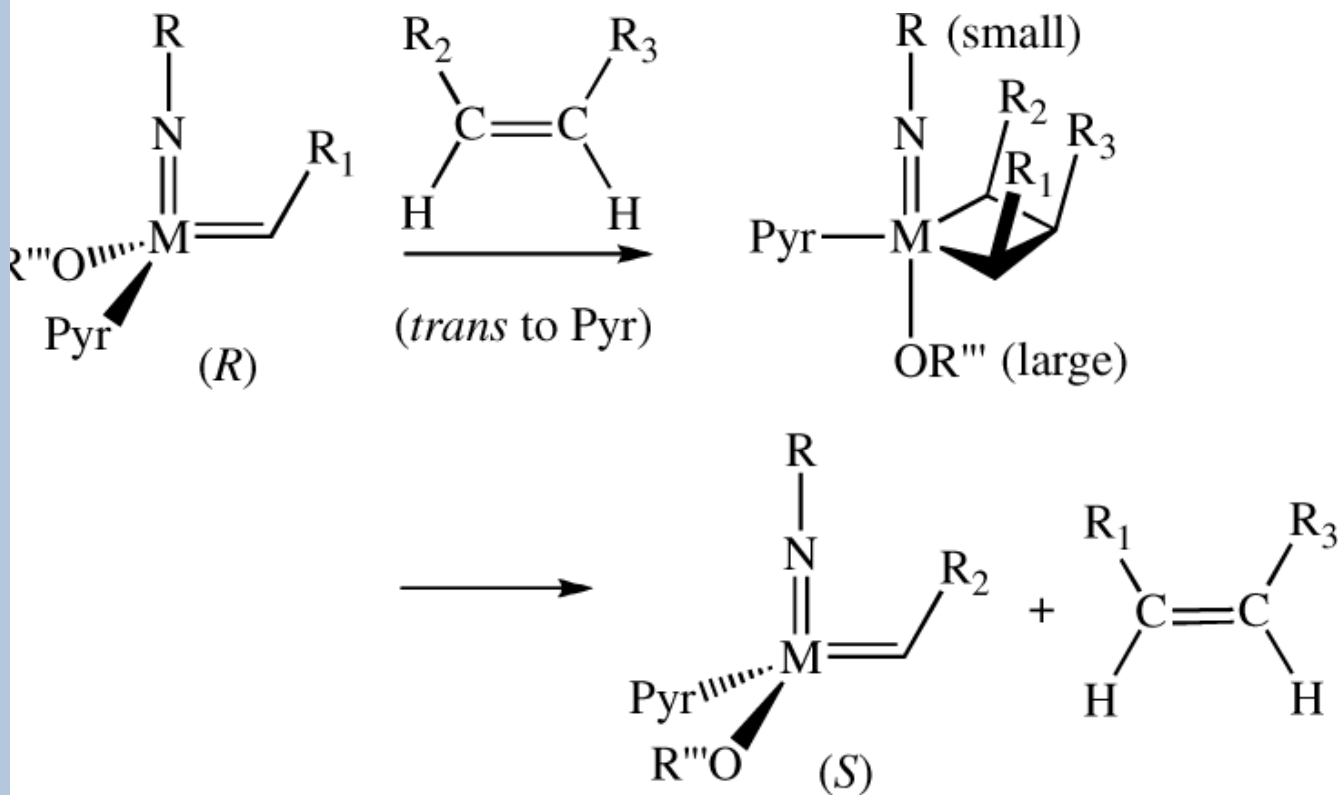
Monoaryloxy-pyrrolide (MAP) olefin metathesis catalysts, which can be prepared through addition of a phenol to a bispyrrolide species,¹ can be especially efficient for enantioselective olefin metathesis reactions. For example, *mixtures of diastereomers* of **1** (R = 1-adamantyl, R' = Me, R'' = Br) that are prepared *in situ* efficiently ring-close an intermediate

E-mail: rrs@mit.edu.

Supporting Information Available: Experimental details for the synthesis of all compounds and metathesis reactions, and details of the X-ray study. Supporting Information is available free of charge via the Internet at <http://pubs.acs.org>.

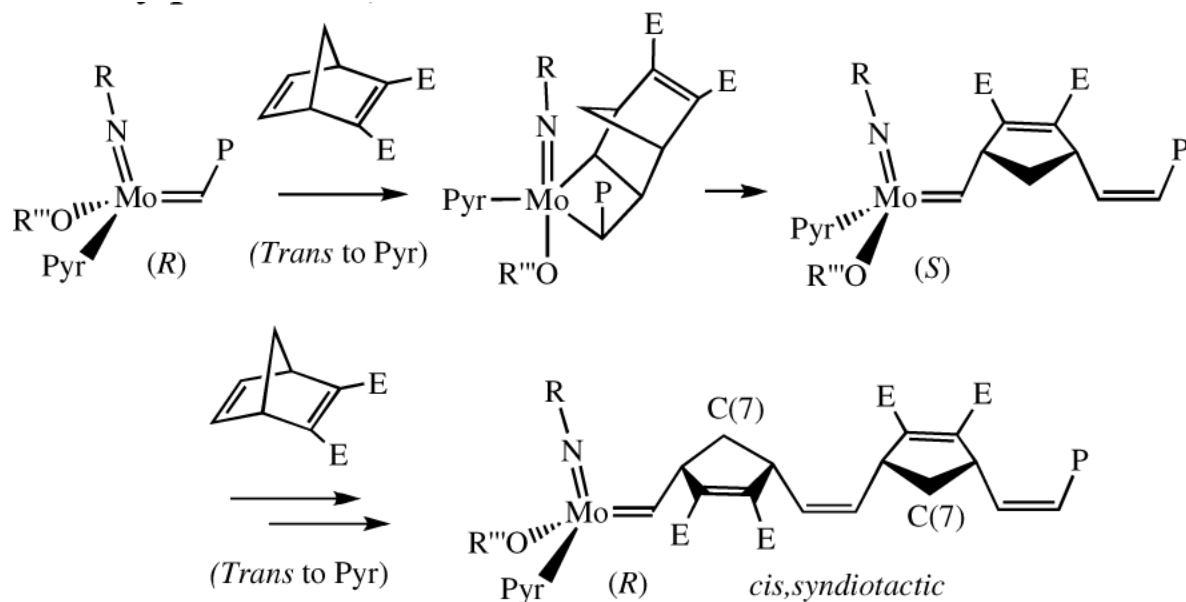


in an enantioselective synthesis of the *Aspidosperma* alkaloid, quebrachamine,^{2a,2b} and catalyze *Z*-selective and enantioselective cross-metatheses.^{2c} *Z*-selectivity is proposed to be possible when olefin attacks at the metal *trans* to the pyrrolide in a *syn* complex to yield metallacyclobutane intermediates in which all substituents point toward the “small” axial imido ligand and away from the “large” axial OR” group (equation 1, Pyr = pyrrolide). Studies involving tungsten³ or molybdenum⁴ MAP species support the proposals that (i) metallacyclobutanes that contain axial imido and alkoxide ligands are metathesis intermediates, and that (ii) the stereochemistry at the metal *inverts* as a consequence of each forward metathesis step (equation 1; R₁, R₂, R₃ = alkyl groups).

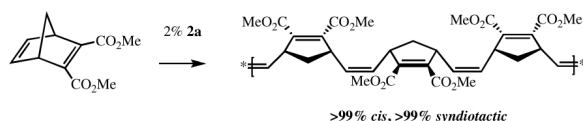


If the mechanism proposed in equation 1 is correct, then ROMP of a substituted norbornadiene initiated by the appropriate MAP species should give rise to a *cis,syndiotactic* polymer, e.g., that shown in equation 2 (E = ester), a microstructure that is not known in pure form.⁵ Therefore we became interested in confirming the proposed transformation shown in equation 2, and if successful, in exploring other Z-selective reactions.

As the OR''' group we chose O-2,6-(2,4,6-*i*-Pr₃C₆H₂)₂C₆H₃ (hexaisopropylterphenoxide = HIPTO⁶) (see **2**) in order to ensure that OR''' is sufficiently "large," and adamantyl as the "small" imido substituent (R).^{2c} Addition of HIPTOH to Mo(NAd)(CHCMe₂Ph)(C₄H₄N)₂^{1a} led to isolable *syn*-Mo(NAd)(CHCMe₂Ph)(C₄H₄N)(HIPTO) (**2a**; R' = H) in good yield. Polymerization of dicarbomethoxynorbornadiene (DCMNBD) with 2% **2a** in toluene, followed by quenching the



reaction with benzaldehyde, yielded a >99% *cis*, >99% tactic polymer with a C(7) resonance at 38.0 ppm in the ^{13}C NMR spectrum in CDCl_3 (cf. 38.7 ppm for *cis, isotactic* polyDCMNBD⁵) and an olefinic carbon resonance at 131.5 ppm (the same as in *cis, isotactic* polyDCMNBD⁵). A similar highly tactic polymer was formed upon polymerization of 5,6-dicarbomethoxynorbornadiene (DCMenNBD). Since the inequivalent olefinic protons in poly(DCMenNBD) were *not* coupled, poly(DCMenNBD) prepared with **2a** must be *syndiotactic*.⁵ Therefore we conclude that poly(DCMNBD) prepared with **2a** as the initiator is also >99% *cis* and >99% *syndiotactic* (equation 3, Table 1). Poly(DCMNBD) prepared with an initiator that contains a dimethylpyrrolide (**2b**, $\text{R}' = \text{Me}$, Table 1) was also >99% *cis* and >99% *syndiotactic*. Poly(DCMNBD) samples prepared with **2c**, **3a**, and **3b** (Table 1)



(3)

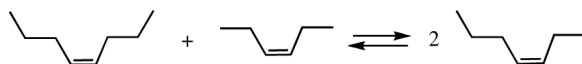
were found to have lower *cis* contents than poly(DCMNBD) prepared with **2a** or **2b**. Clearly the choice of “large” and “small” groups is critical for high *Z* content, as one might predict if the “all *syn*” metallacyclobutane intermediate must form (eq 1).

The only chirality present in racemic initiators of type **2** and **3** is the stereogenic metal center. A stereogenic metal center should exert a powerful electronic control (olefin approach *trans* to pyrrolide, eqs 1 and 2) in a coordination polymerization reaction that is absent in the vast majority of other types of metal-catalyzed polymerizations. This “stereogenic metal” (SM) control is distinct from enantiomorphic site control and chain-end control, which are both primarily steric in origin and arise from chirality in a ligand or in a polymer chain-end in the last-inserted monomer, respectively.

Poly(DCMNBD) samples prepared with **1a-1d** (Table 1), in which OR^{'''} is the large, enantiomerically pure aryloxide in **1**,² do not contain exclusively *cis* linkages. Evidently one or both of the two diastereomers²⁻⁴ (neglecting any chain end chirality) that must be formed sequentially in these circumstances is not (or are not) as *Z*-selective as **2a** or **2b**.

In order to explore the potential generality of *Z*-selective polymerization with **2a** we turned to ROMP of cyclooctene and 1,5-cyclooctadiene (300 equiv). Poly(cyclooctene) was formed with a *cis* content of >99%. The T_m of *cis*-poly(cyclooctene) was found to be -10 °C, the temperature predicted by Feast in studies of cyclooctene polymers that contain various lower *cis* contents.⁷ We obtained poly(cyclooctene) with a *cis* content of 20% employing Mo(NAr)(CHCMe₂Ph)[OCMe(CF₃)₂]₂ as the initiator and 86% with **1b** as the initiator. Poly(cyclooctadiene) was formed with a *cis* content of >99% (according to ¹³C NMR) when **2a** was employed as an initiator. Poly(cyclooctadiene) prepared employing Mo(NAr)(CHCMe₂Ph)[OCMe(CF₃)₂]₂ as the initiator had a *cis* content of 15%. No T_m could be observed between 50 °C and -75 °C for *cis*-poly(cyclooctadiene), which is in accord with studies by Feast.⁷ We are not aware of any report of *pure cis*-poly(cyclooctadiene) or *cis*-poly(cyclooctene) in the literature.

Z-selectivity is also observed in the metathesis of internal *cis* olefins with **2a** as the initiator. Addition of 1% **2a** to a 1:1 mixture of *cis*-4-octene and *cis*-3-hexene in diethyl ether leads to an equilibrium mixture that contains 50% *cis*-3-heptene after 8 hours at 22 °C (equation 4). The slow rate of the *Z*-selective reaction shown in equation 4 is consistent with the required formation of the highly sterically crowded “all-*syn*” metallacyclobutane intermediate (eq 1), but reactions that proceed via metallacyclobutane intermediates that lead to *trans* C=C bonds are even slower. Over a period of three days the *cis* olefins slowly isomerize to approximately a 1:1 *cis/trans* mixture.



(4)

We prepared the unsubstituted tungstacyclobutane complex, W(NAr)(C₃H₆)(C₄H₄N)(HIPTO) (Ar = 2,6-*i*-Pr₂C₆H₃), from W(NAr)(CHCMe₂Ph)(C₄H₄N)₂(dme)⁸ in a manner analogous to that reported recently for related tungstacyclobutane species.³ (The WNAr species was chosen because molybdacyclobutane species are relatively unstable toward loss of olefin and W=NAd complexes are unknown.) As shown in Figure 1, the imido and phenoxide ligands are located in axial positions, as expected. The plane of central ring of the HIPTO ligand is oriented “perpendicular” to the W-C_β vector (W-C2) of the WC₃ ring so that one set of 2,6 isopropyl groups in the HIPTO ligand are located “under” the WC₃H₆ ring. A space filling model shows that the three *anti* protons in the metallacycle are in close contact with isopropyl methyl group protons, making it unlikely that a metallacycle of this type could be formed readily if an *anti* substituent were present on an α or β carbon. The other set of 2,6-HIPTO isopropyl groups surround the pyrrolide ligand and force it to line up along the N1-W-O1 axis. The W-O-C bond angle is relatively large (W1-O1-C31 = 163.7(4)°), consistent with the significant steric demands of the HIPTO ligand.

“Mistakes” that yield *trans* C=C bonds can arise either when a *cis* olefin reacts with an (unseen) *anti* alkylidene⁹ to yield a *syn*(α)/*syn*(β)/*anti*(α) metallacyclobutane, or when a *cis* olefin attacks a *syn* alkylidene to yield an *anti*(α)/*anti*(β)/*syn*(α) metallacyclobutane. *Anti* alkylidenes in rare cases have been observed in the solid state or in solution.¹⁰ Previous ROMP studies suggest that *anti* species may be orders of magnitude more reactive than *syn* species, and that *trans* C=C bonds can form even though no *anti* alkylidene can be observed.^{5c} Preventing formation of any significant amount of product derived from a reaction that involves an *anti*

alkylidene is likely to be a key aspect of Z-selectivity in MAP catalysts in which the imido R group is “small” and the OR ligand is “large.”

Supplementary Material

Refer to Web version on PubMed Central for supplementary material.

Acknowledgment

We are grateful to the U.S. Army (Institute for Soldier Nanotechnology, under Contract DAAD-19-02-D-0002 with the U.S. Army Research Office to R.R.S.), the NIH (Grant GM-59426 to R.R.S. and A.H.H.), and the National Science Foundation (CHE-0554734 to R.R.S.) for financial support. We thank Dr. Brad Bailey for the sample of Naph₃SiOH.

References

- (1). (a) Hock A, Schrock RR, Hoveyda AH. *J. Am. Chem. Soc* 2006;128:16373. [PubMed: 17165793] (b) Singh R, Schrock RR, Müller P, Hoveyda AH. *J. Am. Chem. Soc* 2007;129:12654. [PubMed: 17902675]
- (2). (a) Malcolmson SJ, Meek SJ, Sattely ES, Schrock RR, Hoveyda AH. *Nature* 2008;456:933. [PubMed: 19011612] (b) Sattely ES, Meek SJ, Malcolmson SJ, Schrock RR, Hoveyda AH. *J. Am. Chem. Soc* 2009;131:943. [PubMed: 19113867] (c) Ibrahim I, Yu M, Schrock RR, Hoveyda AH. *J. Am. Chem. Soc* 2009;131:3844. [PubMed: 19249833]
- (3). Jiang AJ, Simpson JH, Müller P, Schrock RR. *J. Am. Chem. Soc* 2009;131 in press
- (4). Marinescu SC, Schrock RR, Li B, Hoveyda AH. *J. Am. Chem. Soc* 2009;131:58. [PubMed: 19086901]
- (5). (a) McConville DH, Wolf JR, Schrock RR. *J. Am. Chem. Soc* 1993;115:4413. (b) O'Dell R, McConville DH, Hofmeister GE, Schrock RR. *J. Am. Chem. Soc* 1994;116:3414. (c) Oskam JH, Schrock RR. *J. Am. Chem. Soc* 1993;115:11831. (d) Bazan G, Khosravi E, Schrock RR, Feast WJ, Gibson VC, O'Regan MB, Thomas JK, Davis WM. *J. Am. Chem. Soc* 1990;112:8378.
- (6). Stanciu C, Olmstead MM, Phillips AD, Stender M, Power PP. *Eur. J. Inorg. Chem* 2003:3495.
- (7). Dounis P, Feast WJ, Kenwright AM. *Polymer* 1995;36:2787.
- (8). Kreckmann T, Arndt S, Schrock RR, Müller P. *Organometallics* 2007;26:5702.
- (9). Recent studies of tungsten methylene MAP complexes³ show that the methylene ligand rotates readily about the W=C bond (10-100 s⁻¹), making it likely that *syn* and (unseen) *anti* isomers of monosubstituted methylenes interconvert relatively rapidly.
- (10). (a) Schrock RR. *Chem. Rev* 2002;102:145. [PubMed: 11782131] (b) Schrock RR. *Chem. Rev* 2009;109 online 3/13

Table 1
 Synthesis of poly(DCMNBD) with various initiators.^a

Initiator	R	R'	or'''	Cis content
2a	Ad	H	HIPTO	>99%
2b	Ad	Me	HIPTO	>99%
2c	Ar	H	HIPTO	70%
3a	Ad	Me	TPP	83%
3b ^b	Ad	H	OSiNaph ₃	44%
1a ^b	Ar	Me	Bitet; R'' = Br	65%
1b ^b	Ad	Me	Bitet; R'' = Br	70%
1c ^b	Ad	Me	Bitet; R'' = Me	90%
1d ^b	Ad	H	Bitet; R'' = CHPh ₂	90%

^a Ad = 1-adamantyl; Ar = 2,6-i-Pr₂C₆H₃; TPP = 2,3,5,6-Ph₄C₆H; Naph = 2-naphthyl; Bitet is the aryloxide shown in **1**.

^b Prepared *in situ*; see Supporting Information.